



 **SURYA**
HOSPITALITY

MARKETED IN INDIA BY

WOVENDREAMS

VISIT OUR OFFICE AT
208/310, Gokul Arcade B,
Subash Road, Vile Parle East,
Mumbai - 400057. Maharashtra.
India

Call: +91 99 87 622335.

Visit Us On: www.wovendreams.in

Email: contact@wovendreams.in

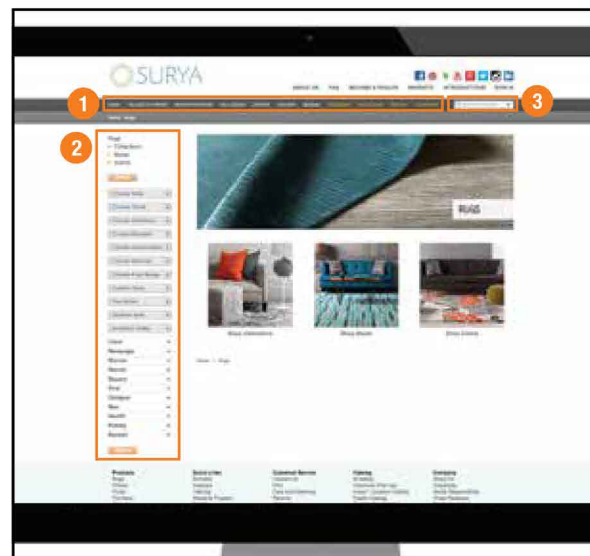


Interior Architect : Philip Koether Architects / Project : Batch Yard, Everett, MA.



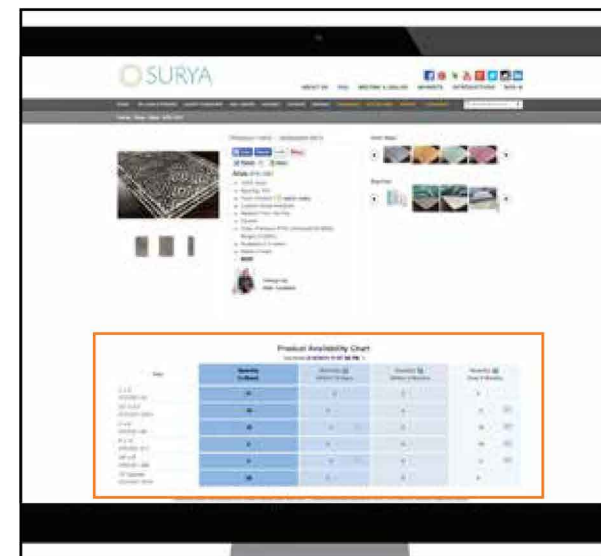
FULL SPECTRUM OF PRODUCTS

You can find a wealth of information on the Surya website, including regularly refreshed content spotlighting the latest market events, product introductions and trends. We invite you to visit and explore the site regularly. In addition, an online account enables you to easily check prices, place orders, monitor order status, track shipments and review invoices—anywhere, anytime. It is helpful to note that orders placed online are usually fulfilled faster than orders submitted via fax or e-mail.



PRODUCT SEARCH

1. Search within a product category by clicking on the appropriate tab
2. Use the product filter for a more specific search:
 - select the category you would like to search
 - use the sidebar to search by style, trend, collection, designer, construction, material, price range, shape, color and availability
3. Use the search bar to search by any keyword (e.g., Collection, sku, name)



INVENTORY AVAILABILITY

Check inventory availability for all items 24/7 without logging into your account:

- data is updated daily
- includes number of items in stock
- if an item is not in inventory, you can view the expected quantity in-stock within 30 days, two months and over two months, along with an ETA upon roll-over with mouse

CUSTOM RUGS



W Atlanta – Buckhead | Atlanta, GA

Nearly every rug is made from one of three sources—plants, animals or plastics. In hospitality and contract applications, durability and stain resistance are the two most critical considerations when designing a custom rug. Understanding the differences in materials and constructions, and considering the application, will help to ensure that a custom designed rug will withstand the rigors of the environment in which it is placed.

Plant-based rugs such as jute, cotton, viscose and bamboo silk have the least natural stain resistance. Just as a wine

stain would be difficult to remove from a white cotton t-shirt, plant-based rugs are typically the most difficult to clean. Additionally, these fibers typically do not wear as well as animal and plastic-based materials. Viscose and bamboo silk are also very slippery yarns and can pull away from the backing, creating sprouts that must be trimmed.

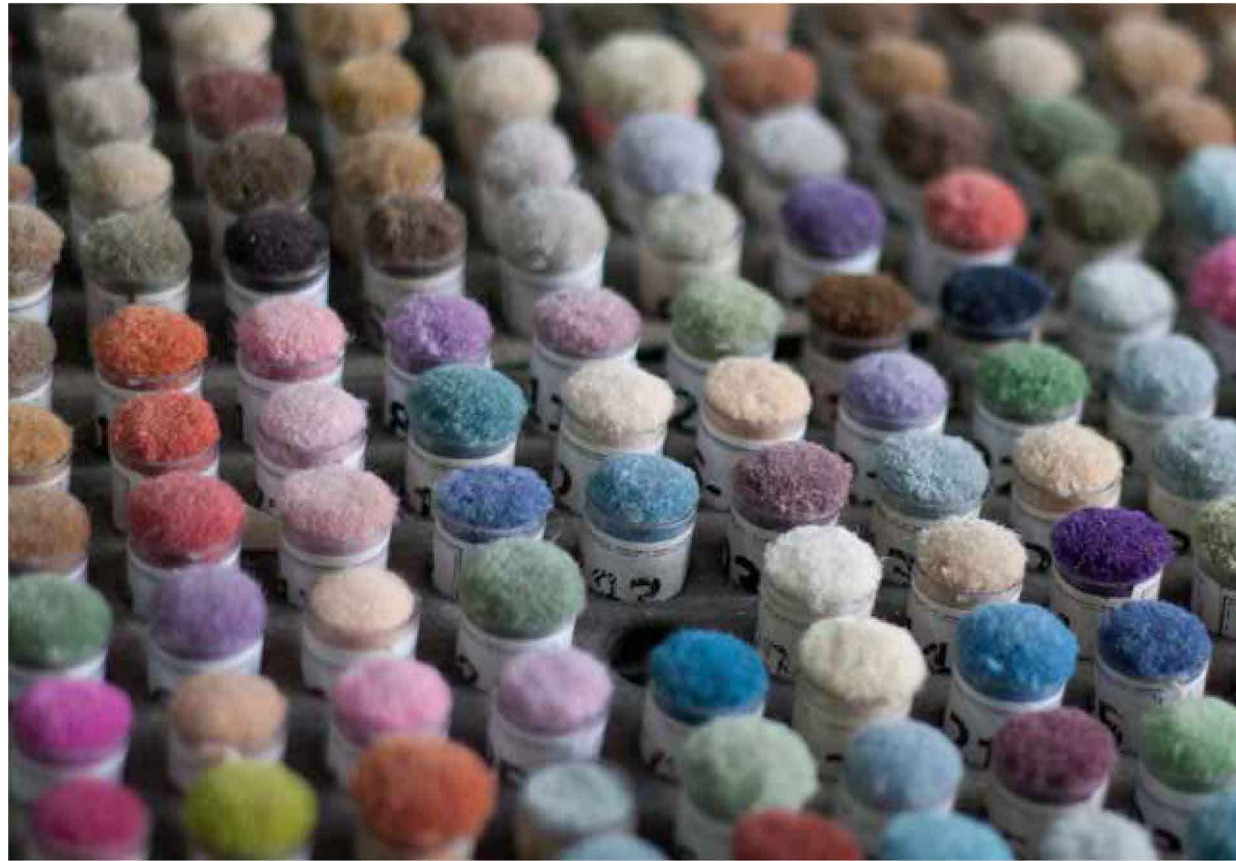
Animal-based rugs include wool, hair on hide and furs. Wool is one of the most durable fibers in the world and has been used in rugs for thousands of years. It is a renewable resource and is naturally flame resistant. Lanolin in the

hair creates a natural barrier to stains which, makes wool easy to clean. In cut pile wool rugs, longer fibers such as New Zealand wool mean less shedding. Shedding is also minimized in knotted and loop pile constructions.

Petroleum-based plastics include nylon, polyester and polypropylene (also known as olefin). While these materials exhibit better stain resistance and durability than plant based-fibers, they are typically found in budget-driven applications, not more luxurious high-end applications such as suites.

MARKETED IN INDIA BY www.WOVENDREAMS.in

Call: +91 - 99 87 622335
Email: contact@wovendreams.in



At Surya Hospitality, our goal is to take the mystery out of custom rug design. The following pages describe our recommended constructions and the benefits of each. Our team of experts will assist you with creating a CAD of your design, selecting from our standard collection of 120 colors or matching your colors, creating a strike-off, and then producing the actual rugs.

Custom CADs typically require two (2) weeks. Strike-offs are produced in approximately four (4) weeks.

CUSTOM RUG CONSTRUCTIONS



HI Connect 2015 Best Public Space Winner -Designer YWS, Las Vegas

MARKETED IN INDIA BY www.WOVENDREAMS.in

Call: +91 - 99 87 622335

Email: contact@wovendreams.in

- » Most Dense Hand-Tufted Wool
- » Resistant to Crushing & Matting
- » No Limitations on Design & Color
- » Loop & Carving Detail Possible
- » Sheds Less than Other Tufted Wool
- » Suitable for Corridors & Lobbies

CONSTRUCTION: Premium Hand-Tufted Wool

WHOLESALE COST: \$14.00 - \$28.00 per sq ft

MINIMUM ORDER QUANTITY: 1

LEAD TIME: 2 to 3 months, plus transit (*Starts from deposit and design approval, transit is six (6) weeks by water or two (2) weeks by air*)

BACKING: 24 oz cotton canvas

FLAMMABILITY: Passes FF1-70 and FF2-70

PILE HEIGHT:	0.375 in	9.5 mm
TOTAL HEIGHT:	0.5 in	12.7 mm
YARN WEIGHT:	10.5 oz/ft ²	3205 gm/m ²
TOTAL WEIGHT:	14.75 oz/ft ²	4500 gm/m ²

DURABILITY: ★★★★★

STAIN RESISTANCE: ★★★★★





- » Most Commonly Specified Custom Choice
- » Hand-Tufted Wool for Budget Projects
- » Very Durable
- » Easy to Clean
- » Loop & Carving Available
- » Suitable for Guestrooms & Suites

CONSTRUCTION: Value Hand-Tufted Wool

WHOLESALE COST: \$9.00 - \$18.00 per sq ft

MINIMUM ORDER QUANTITY: 1

LEAD TIME: 2 to 3 months, plus transit (*Starts from deposit and design approval, transit is six (6) weeks by water or two (2) weeks by air*)

BACKING: 24 oz cotton canvas

FLAMMABILITY: Passes FF1-70 and FF2-70

PILE HEIGHT:	0.375 in	9.5 mm
TOTAL HEIGHT:	0.5 in	12.7 mm
YARN WEIGHT:	9 oz/ft ²	2760 gm/m ²
TOTAL WEIGHT:	13 oz/ft ²	3965 gm/m ²

DURABILITY: ★★★★★

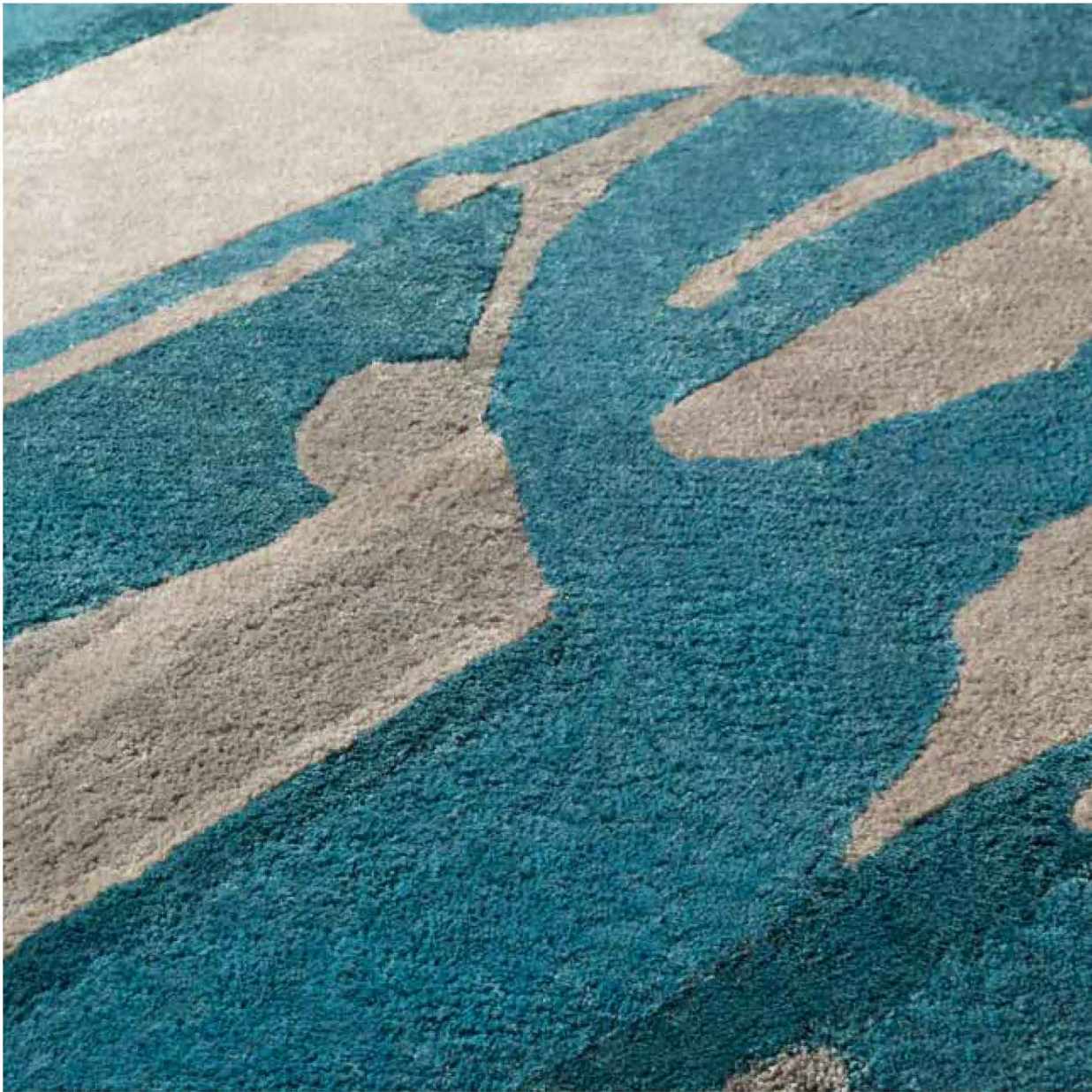
STAIN RESISTANCE: ★★★★★

- » Highest Luster Yarn Available
- » More Durable than Viscose or Bamboo Silk
- » Extremely Soft Underfoot
- » Great for Luxury Applications
- » More Stain Resistant than Silks
- » Minimal Shedding

CONSTRUCTION: Hand-Tufted Tencel
WHOLESALE COST: \$15.00 - \$30.00 per sq ft
MINIMUM ORDER QUANTITY: 1
LEAD TIME: 2 to 3 months, plus transit (*Starts from deposit and design approval, transit is six (6) weeks by water or two (2) weeks by air*)
BACKING: 24 oz cotton canvas
FLAMMABILITY: Passes FF1-70 and FF2-70

PILE HEIGHT:	0.375 in	9.5 mm
TOTAL HEIGHT:	0.5 in	12.7 mm
YARN WEIGHT:	12 oz/ft ²	3660 gm/m ²
TOTAL WEIGHT:	16 oz/ft ²	4880 gm/m ²

DURABILITY: ★★★★★
STAIN RESISTANCE: ★★★★★





- » Lowest Cost Hand-Tufted Option
- » Vibrant Colors Achievable
- » Inherently Moth Proof
- » Resists Staining
- » Less Shedding than Wool
- » Ideal for Large Volume Projects

CONSTRUCTION: Hand-Tufted Polyester

WHOLESALE COST: \$6.00 - \$12.00 per sq ft

MINIMUM ORDER QUANTITY: Call for details.

LEAD TIME: 2 to 3 months, plus transit (*Starts from deposit and design approval, transit is six (6) weeks by water or two (2) weeks by air*)

BACKING: 24 oz cotton canvas

FLAMMABILITY: Passes FF1-70 and FF2-70

PILE HEIGHT:	0.3125 in	7.9 mm
TOTAL HEIGHT:	0.5 in	12.7 mm
YARN WEIGHT:	7.5 oz/ft ²	2245 gm/m ²
TOTAL WEIGHT:	11 oz/ft ²	3355 gm/m ²

DURABILITY: ★★★★★

STAIN RESISTANCE: ★★★★★

- » Works Well in Office Environments
- » Non-Shedding Wool Construction
- » Very Durable
- » Low, Dense Pile
- » Unique All Loop Texture
- » Abrash Techniques Available

CONSTRUCTION: Micro Loop Wool

WHOLESALE COST: \$9.00 - \$18.00 per sq ft

MINIMUM ORDER QUANTITY: 1

LEAD TIME: 2 to 3 months, plus transit (*Starts from deposit and design approval, transit is six (6) weeks by water or two (2) weeks by air*)

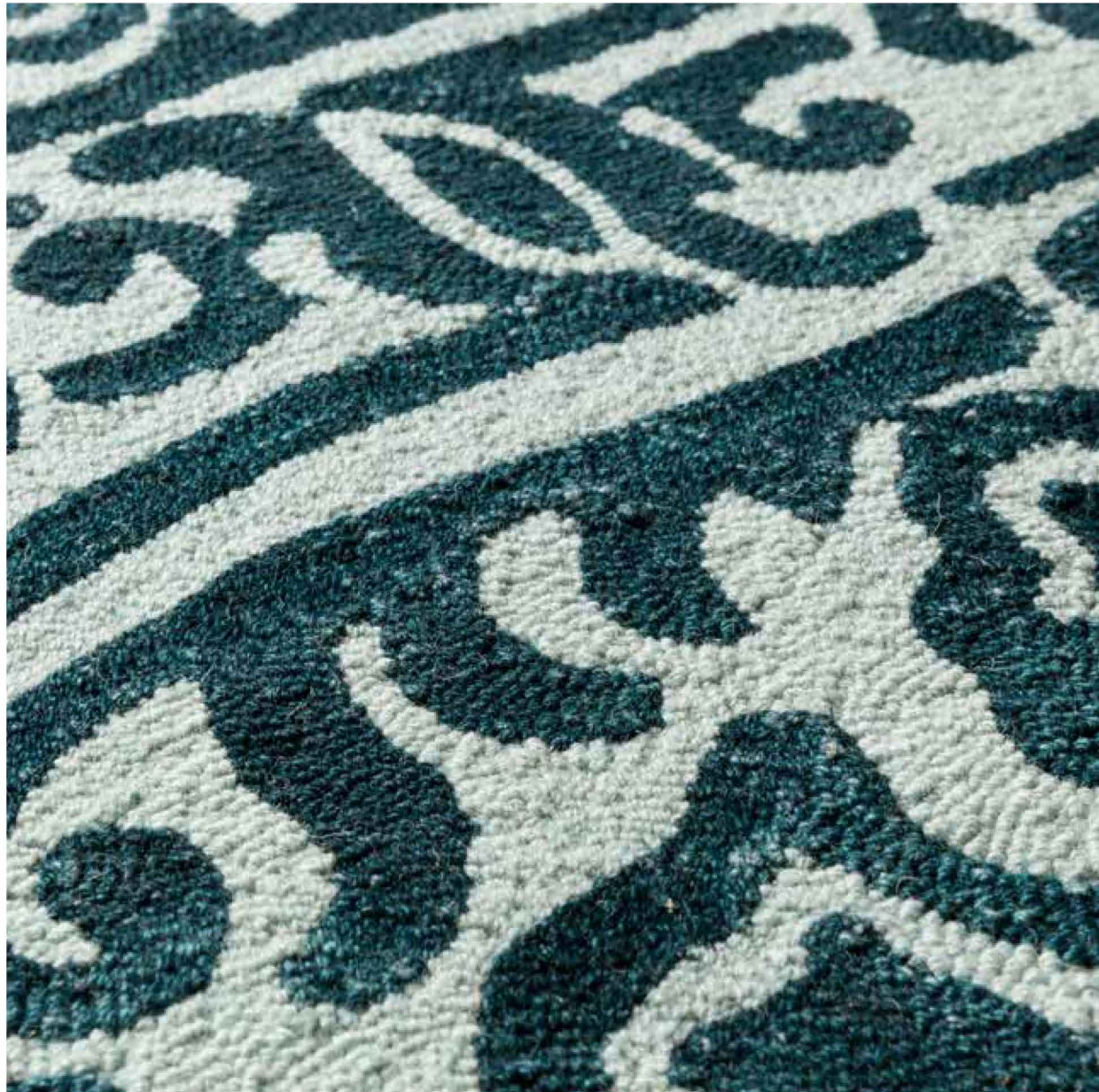
BACKING: 24 oz cotton canvas

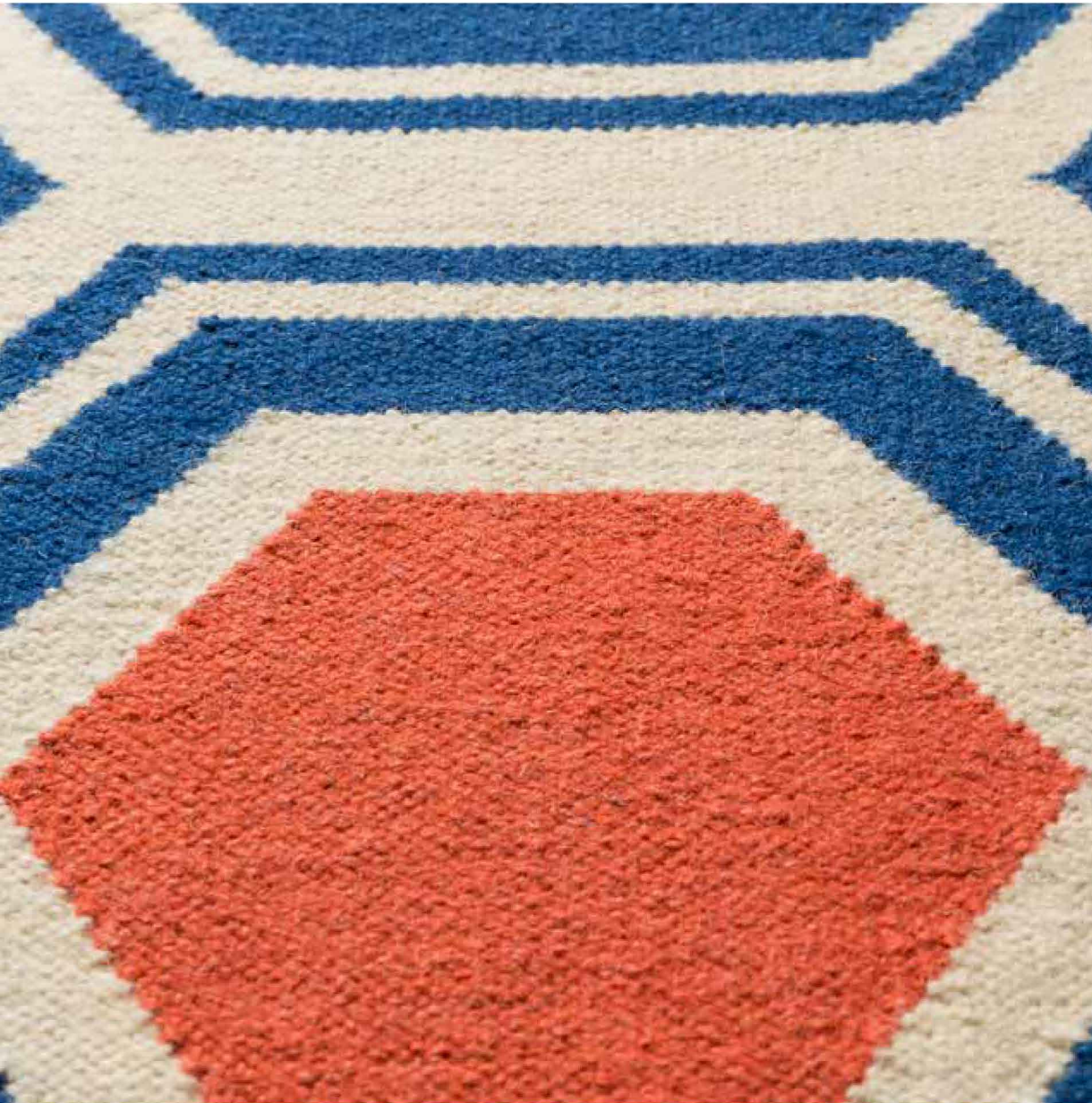
FLAMMABILITY: Passes FF1-70 and FF2-70

PILE HEIGHT:	0.25 in	6.3 mm
TOTAL HEIGHT:	0.4375 in	11.1 mm
YARN WEIGHT:	7.5 oz/ft ²	2245 gm/m ²
TOTAL WEIGHT:	11 oz/ft ²	3355 gm/m ²

DURABILITY: ★★★★★

STAIN RESISTANCE: ★★★★★★





- » Lowest Overall Height
- » Extremely Durable Woven Construction
- » Reversible
- » No Shedding or Pilling
- » Lightweight, Easy to Move
- » Lowest Cost Per Square Foot

CONSTRUCTION: New Zealand Wool Flatweave

WHOLESALE COST: \$5.00 - \$10.00 per sq ft

MINIMUM ORDER QUANTITY: 1

LEAD TIME: 2 to 3 months, plus transit (*Starts from deposit and design approval, transit is six (6) weeks by water or two (2) weeks by air*)

BACKING: n/a

FLAMMABILITY: Passes FF1-70 and FF2-70

PILE HEIGHT:	n/a	n/a
TOTAL HEIGHT:	0.5 in	12.7 mm
YARN WEIGHT:	n/a	n/a
TOTAL WEIGHT:	5 oz/ft ²	1525 gm/m ²

DURABILITY: ★★★★★

STAIN RESISTANCE: ★★★★★

- » Great for Sand & Sea Properties
- » Outdoor Safe
- » Reversible – Extended Time between Cleaning
- » Mold Resistant
- » Inherently Resists Staining
- » Made from Recycled Materials

CONSTRUCTION: PET (Synthetic) Flatweave
WHOLESALE COST: \$5.00 - \$10.00 per sq ft
MINIMUM ORDER QUANTITY: 1
LEAD TIME: 2 to 3 months, plus transit (*Starts from deposit and design approval, transit is six (6) weeks by water or two (2) weeks by air*)

BACKING: n/a
FLAMMABILITY: Passes FF1-70 and FF2-70

PILE HEIGHT:	n/a	n/a
TOTAL HEIGHT:	0.25 in	6.3 mm
YARN WEIGHT:	n/a	n/a
TOTAL WEIGHT:	6 oz/ft²	1830 gm/m²

DURABILITY: ★★★★★★
STAIN RESISTANCE: ★★★★★★





- » Perfect for Signature Projects
- » High Durability - Lasts for Years
- » Low Pile - Exceeds ADA Requirements
- » No Shedding
- » Made from New Zealand Wool
- » Characterized by Large Visible Knots

CONSTRUCTION: Hand-Knotted New Zealand Wool - Turkish

WHOLESALE COST: \$21.00 - \$42.00 per sq ft

MINIMUM ORDER QUANTITY: 1

LEAD TIME: 3 to 5 months, plus transit (*Starts from deposit and design approval, transit is six (6) weeks by water or two (2) weeks by air*)

BACKING: n/a

FLAMMABILITY: Passes FF1-70 and FF2-70

PILE HEIGHT:	.25 in	6.3 mm
TOTAL HEIGHT:	0.375 in	9.5 mm
YARN WEIGHT:	n/a	n/a
TOTAL WEIGHT:	9 oz/ft ²	2745 gm/m ²

DURABILITY: ★★★★★

STAIN RESISTANCE: ★★★★★

- » Most Luxurious Construction
- » Intricate Pattern Work Possible
- » Hand-Carved Details Achievable
- » Plush, Dense Pile
- » Withstands Rigors of High Traffic
- » Recognized by Small, Detailed Tufts

CONSTRUCTION: Hand-Knotted New Zealand Wool - Nepalese

WHOLESALE COST: \$27.00 - \$54.00 per sq ft

MINIMUM ORDER QUANTITY: 1

LEAD TIME: 3 to 5 months, plus transit (*Starts from deposit and design approval, transit is six (6) weeks by water or two (2) weeks by air*)

BACKING: n/a

FLAMMABILITY: Passes FF1-70 and FF2-70

PILE HEIGHT:	0.25 in	6.3 mm
TOTAL HEIGHT:	0.375 in	9.5 mm
YARN WEIGHT:	n/a	n/a
TOTAL WEIGHT:	13 oz/ft ²	3965 gm/m ²

DURABILITY: ★★★★★

STAIN RESISTANCE: ★★★★★





- » Most Cost Effective Hand-Knotted Option
- » Highly Durable to Withstand Traffic
- » No Shedding
- » Low Total Height
- » All Natural Materials
- » Antique Appearance in a Modern Construction

CONSTRUCTION: Hand-Knotted Zero Pile Wool

WHOLESALE COST: \$11.00 - \$22.00 per sq ft

MINIMUM ORDER QUANTITY: 1

LEAD TIME: 3 to 5 months, plus transit (*Starts from deposit and design approval, transit is six (6) weeks by water or two (2) weeks by air*)

BACKING: n/a

FLAMMABILITY: Passes FF1-70 and FF2-70

PILE HEIGHT:	n/a	n/a
TOTAL HEIGHT:	0.375 in	9.5 mm
YARN WEIGHT:	n/a	n/a
TOTAL WEIGHT:	7.5 oz/ft ²	2285 gm/m ²

DURABILITY: ★★★★★

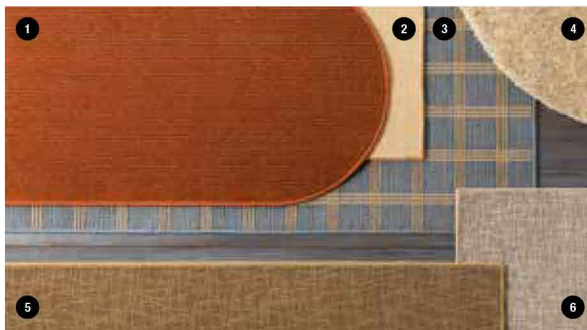
STAIN RESISTANCE: ★★★★★

CUT & SEW RUGS

- » Choose from 150 Designs & Colors
- » Guaranteed to Ship within Two Weeks
- » Great for Insets, Select Any Size & Shape
- » Made in the USA
- » Nylon & Wool Options Available
- » Extremely Durable
- » Easy to Clean



ELA-1004



1. MEY-4007, 2. CAL-7000, 3. ORE-3009, 4. MXN-1001, 5. NOL-1001, 6. DXN-1004



CVY-5000

LIGHTING

A FULL SPECTRUM OF RICH TONES & FINISHES

- » 27 Customizable SKUs
- » All Lamps UL Listed
- » Coordinating Desk & Floor Lamps
- » Eight (8) Foot Clear Cord Available
- » Drawings Illustrating Custom Options Available
- » 100 Piece Minimum Order to Add Switches & Outlets
- » Lead Time is Approximately 135 Days on Average
- » More than 300 In-Stock Lamps

TYPES: Accent, Bridge/Swing Arm, Buffet, Desk/Task, Floor, Table

LAMP SHADE MATERIALS: Burlap, Cotton, Crystal, Linen, Metal, Polyester, Seagrass, Silk, Wood, Wood Veneer

LAMP BASE/BODY MATERIALS: Acrylic, Bamboo, Ceramic, Chrome, Crystal, Glass, Metal, Resin, Shell, Wood



HBK-100

CUSTOMIZABLE OPTIONS

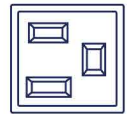
- » A selection of lamps available with USB ports, ADA switches, or three prong outlets at no additional charge



USB PORTS



ADA SWITCH



THREE PRONG OUTLET



HBK-100



SLK-405



SLK-404



LMP-1017



LMP-1018



LMP-1053



LMP-1058



LMP-1020





PILLOWS

MULTIPLE SIZES & SHAPES

- » A Selection Of Pillows Designed for Commercial Applications
- » Pass NFPA 260 & CAL 117
- » Made in the USA—Faster Lead Times
- » Bolster Sizes Available
- » Coordinates With Other Surya Accessories
- » Hidden Zippers & Removable Covers
- » Choice of Poly or Down Inserts
- » Minimum Order of Five (5) Pieces
- » Machine Washable
- » More than 1,200 In-Stock Pillows



1. ART-1007, 2. FA-054, 3. TR-002, 4. CR-000, 5. LD-001, 6. PO-279, 7. AR-003, 8. LU-005, 9. BA-012, 10. AX-003, 11. CU-004

IN-LINE FABRIC OPTIONS: Acrylic, Chenille, Cotton, Hide, Jute, Linen, Nylon, Polyester

COMMERCIAL FABRIC OPTIONS: Acrylic, Polyolefin



PHOS-1
16" x 16"
PHOS-2
20" x 20"
PHOS-3
13" x 19"



PHOS-4
16" x 16"
PHOS-5
20" x 20"
PHOS-6
13" x 19"



PHOS-7
16" x 16"
PHOS-8
20" x 20"
PHOS-9
13" x 19"



PHOS-10
16" x 16"
PHOS-11
20" x 20"
PHOS-12
13" x 19"



PHOS-13
16" x 16"
PHOS-14
20" x 20"
PHOS-15
13" x 19"



PHOS-16
16" x 16"
PHOS-17
20" x 20"
PHOS-18
13" x 19"



PHOS-19
16" x 16"
PHOS-20
20" x 20"
PHOS-21
13" x 19"



PHOS-22
16" x 16"
PHOS-23
20" x 20"
PHOS-24
13" x 19"



PHOS-25
16" x 16"
PHOS-26
20" x 20"
PHOS-27
13" x 19"



PHOS-28
16" x 16"
PHOS-29
20" x 20"
PHOS-30
13" x 19"



PHOS-31
16" x 16"
PHOS-32
20" x 20"
PHOS-33
13" x 19"



PHOS-34
16" x 16"
PHOS-35
20" x 20"
PHOS-36
13" x 19"



PHOS-37
16" x 16"
PHOS-38
20" x 20"
PHOS-39
13" x 19"



PHOS-40
16" x 16"
PHOS-41
20" x 20"
PHOS-42
13" x 19"



PHOS-43
16" x 16"
PHOS-44
20" x 20"
PHOS-45
13" x 19"



PHOS-46
16" x 16"
PHOS-47
20" x 20"
PHOS-48
13" x 19"



PHOS-49
16" x 16"
PHOS-50
20" x 20"
PHOS-51
13" x 19"



PHOS-52
16" x 16"
PHOS-53
20" x 20"
PHOS-54
13" x 19"



PHOS-55
16" x 16"
PHOS-56
20" x 20"
PHOS-57
13" x 19"



PHOS-58
16" x 16"
PHOS-59
20" x 20"
PHOS-60
13" x 19"



PHOS-61
16" x 16"
PHOS-62
20" x 20"
PHOS-63
13" x 19"



PHOS-64
16" x 16"
PHOS-65
20" x 20"
PHOS-66
13" x 19"



PHOS-67
16" x 16"
PHOS-68
20" x 20"
PHOS-69
13" x 19"



PHOS-70
16" x 16"
PHOS-71
20" x 20"
PHOS-72
13" x 19"

POUFS

VERSATILE SEATING OPTIONS

- » More than 300 In-Stock Poufs in a Variety of Styles, Sizes & Materials
- » Coordinates with Other Surya Accessories
- » Top Sellers Guaranteed to Ship within 48 Hours
- » Designer Collections
- » Made in the USA Options
- » Outdoor Safe Options
- » Removable Covers for Many Designs

FABRIC OPTIONS: Acrylic, Chocho, Cotton, Hide, Jute, Leather, Linen, Polyester, PVC, Wool

FILLER OPTIONS: Cotton-Filled, Poly-Filled, Poly-Bead Filled (Indoor/Outdoor Collection), Recycled Cotton, Wood Frame/No Fill



1. POUF-203, 2. POUF-239, 3. POUF-78

A VARIETY OF LIFESTYLES & DESIGN AESTHETICS

- » More than 130 Attractive In-Stock Options
- » Coordinates with Other Surya Accessories
- » Top Sellers Guaranteed to Ship Within 48 Hours
- » Designer Collections
- » Made in the USA Options
- » Hanging Hardware Included
- » Security Hardware Available for an Additional Charge



1. NRT-9500, 2. MRR-1008, 3. NRT-9501, 4. STT-8000, 5. NRT-9502

FRAME MATERIALS: Medium Density Fiberboard (MDF), Metal, Mother of Pearl, Resin, Wood

FRAME STYLES: Brushed, Etched, Hammered, Mirrored, Mosaic

FINISHES: Antiqued/Weathered, Bronze, Champagne, Copper, Gold Leaf, Goldtone, Lacquer, Pewter, Silvertone

DECORATIVE ACCENTS

EYE-CATCHING PIECES

- » A Variety of Interesting Shapes & Sizes
- » Made of Ceramic, Stoneware, Bamboo, Resin or Pressed Paper
- » Range of Colors to Coordinate with Trending Upholstery & Paint, as Well as Surya Rugs & Accessories
- » Top Sellers Ship within 48 Hours



1. ORT803-M, 2. ORT802-M, 3. BAU701-M, 4. ORT801-M, 5. ORT800-M, 6. BAU705-M, 7. BAU707-M

MATERIALS: Bamboo, Ceramic, Medium Density Fiberboard (MDF), Pressed Paper, Resin

TYPES: Bowls, Jars, Sculptures, Trays, Vases

MARKETED IN INDIA BY www.WOVENDREAMS.in

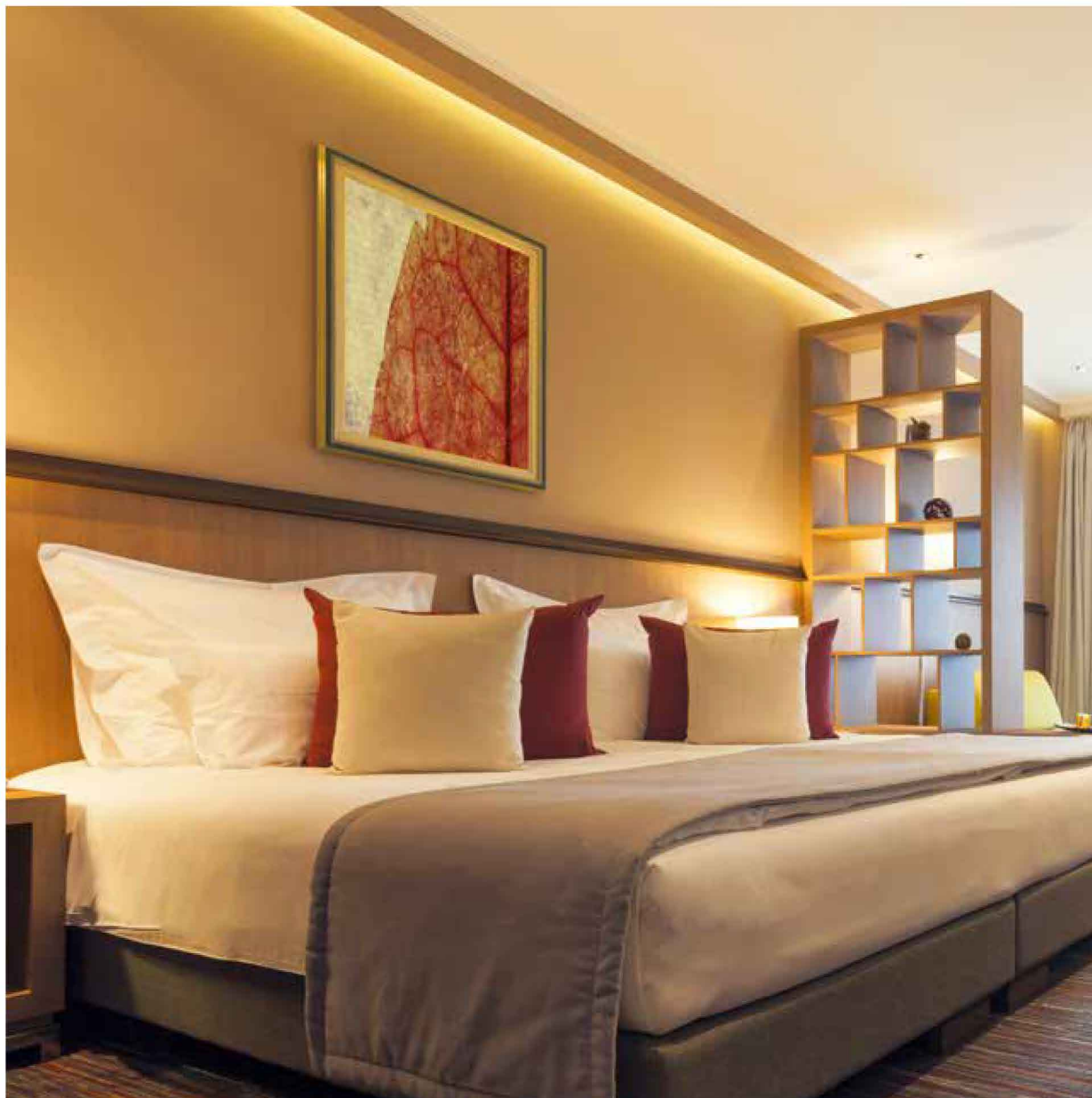
Call: +91 - 99 87 622335

Email: contact@wovendreams.in

**ORDERING MADE EASY AT
SURYA.COM/CUSTOM-ART**

- » Choose from Over 9,000 Curated Images
- » Exclusive Works from More than 100 Artists
- » Ready to Ship in One Week

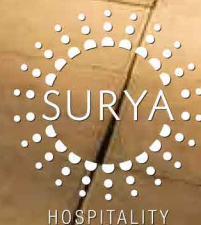
Or Contact Surya Associates
In Your Country



PF107A

MATERIALS: Acrylic, Canvas, Dibond, Paper, Wood

FRAME MATERIALS: Acrylic with Standoffs, Aluminum Floater Frame, Aluminum Mounted, Canvas Framed, Framed Paper, Framed Wood



MARKETED IN INDIA BY www.WOVENDREAMS.in

Call: +91 - 99 87 622335
Email: contact@wovendreams.in